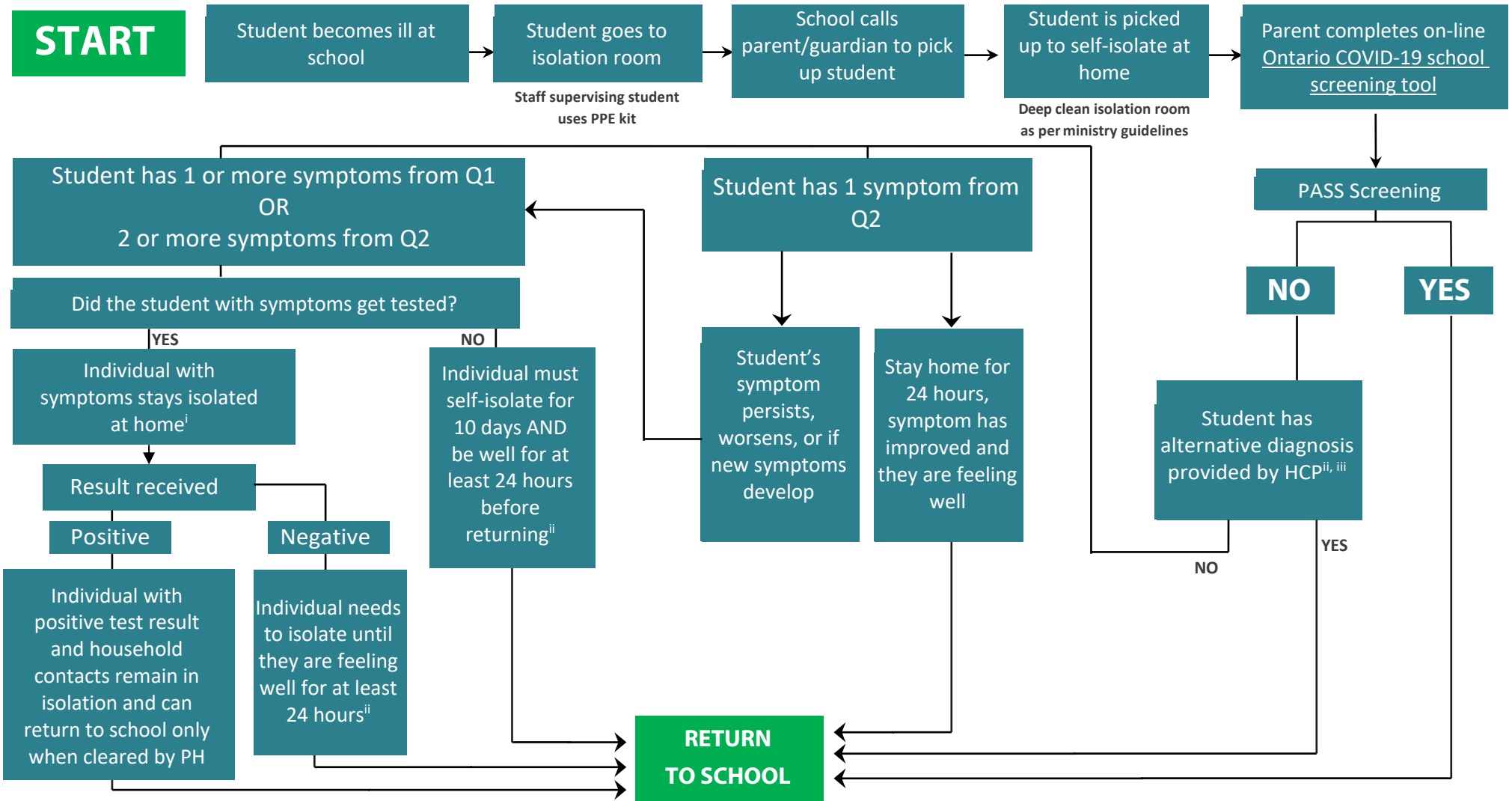


# Symptomatic Student at School:

## School Decision Guide (Revised: October 26, 2020)



- i) Household contacts should monitor for symptoms, siblings can remain in school if they have no symptoms
- ii) Return to school if they are feeling well for at least 24 hours (including no fever (without using medication) and no vomiting or diarrhea for at least 48 hours) OR as directed by their health care provider
- iii) A medical note is not required to return to school

PPE – Personal Protective Equipment; HCP – Healthcare Provider; PH – Public Health;  
 Q1 - Question 1 Ontario Screening Tool; Q2 - Question 2 Ontario Screening Tool