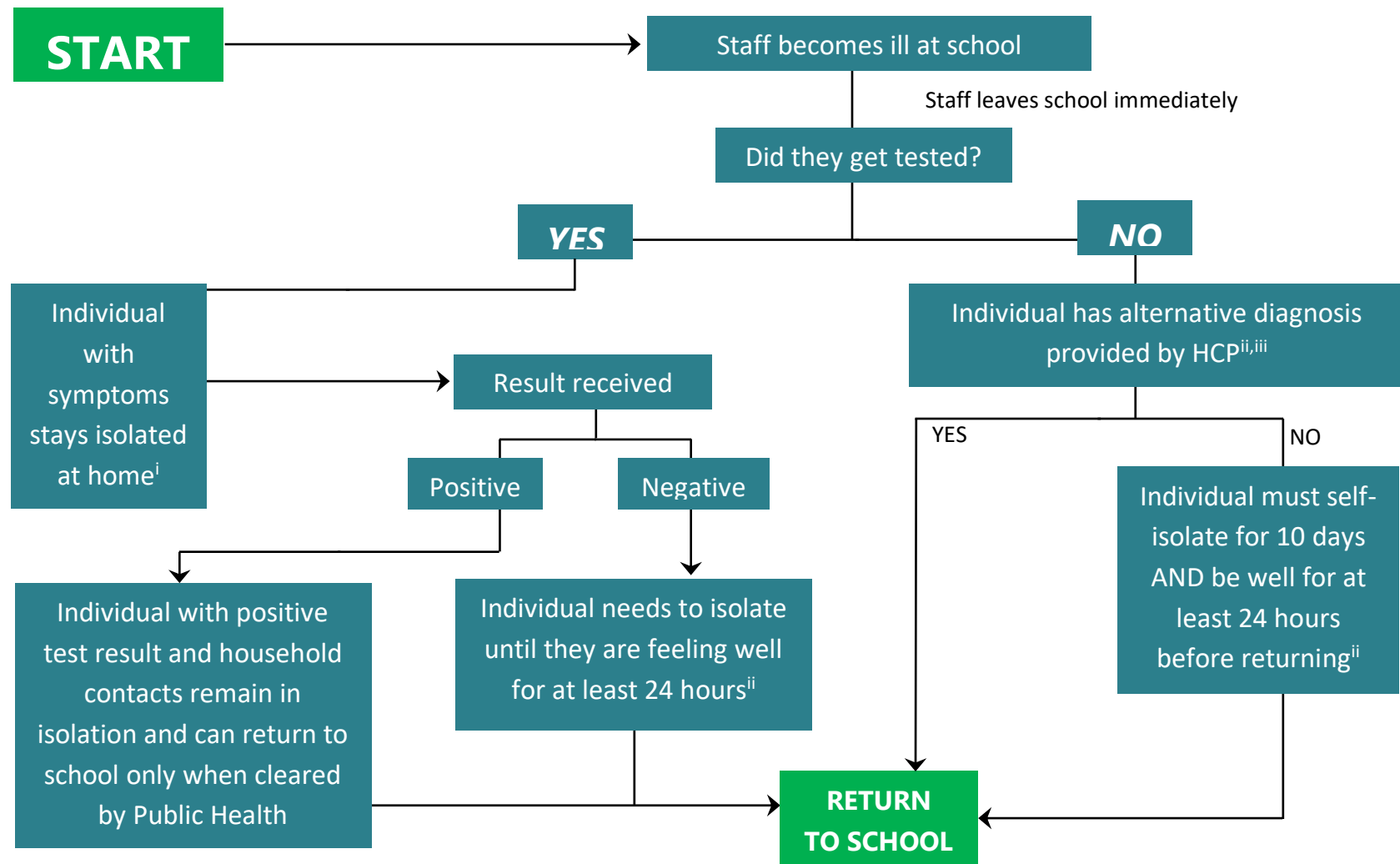


Symptomatic Staff at School: School Decision Guide (Revised: October 26, 2020)



i) Household contacts should monitor for symptoms but can attend work/child care/school if they have no symptoms

ii) Return to school if they are feeling well for at least 24 hours (including no fever (without using medication) and no vomiting or diarrhea for at least 48 hours) OR as directed by their health care provider

iii) A medical note is not required to return to school

